

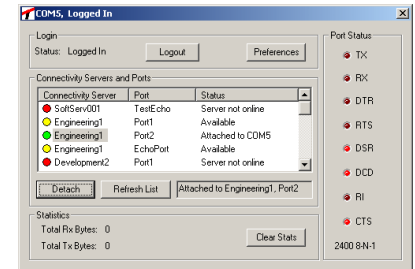
## Features

- Remote Access
  - World-wide Connectivity
- Application Transparency
- Firewall Traversal
- Windows™ 2000/XP
  - System Tray Icon
- Authentication
- Virtual Serial Port
- Secure
  - SSL
  - AES 128-bit Encryption
- Preferences
  - Auto-login
  - Auto-connect
  - Serial Port Enumeration
- Status Window
  - Device Availability
  - Device Status
  - Port Status
  - TX/RX Statistics

The TCC-1000 Connectivity Client connects the user's PC to remotely-located, serial-enabled devices via the Connectivity Gateway as part of the Traversix Connectivity System. The Traversix Connectivity System provides an end-to-end solution for world-wide connectivity to previously inaccessible serial devices—even for devices behind firewalls, without any changes to the firewall or application.

### Virtual Serial Port

The Connectivity Client creates a virtual serial port on your PC. Point your application to this serial port and you are ready to begin operation. The Connectivity Client completely configures and controls the targeted Connectivity Gateway serial port to match your application's settings. In essence, you create a very long serial cable.



### No Development or Training Needed

With the Connectivity Client, there is no need to modify the existing application, saving expensive development. In addition, the field service staff can use the application they already know, eliminating the need for retraining on a new service or application.

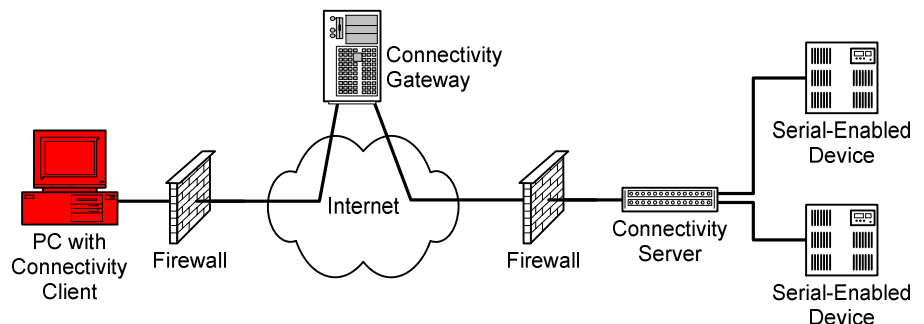
### Firewall Traversal

The Connectivity Client will operate anywhere in the world—whether it is behind a firewall or not. Using smart port access technology, the Client connects to the Connectivity Gateway using automatically selected open ports and protocols, guaranteeing access regardless of firewall configuration. The user can be at the office, at home, on the road, or even at a customer's site and connect without firewall changes.

### Easy to Use

Two simple steps are needed to connect the Connectivity Client to a device. The user logs into the Traversix Connectivity Gateway and second then attaches to the desired device and port. Simple, quick, easy. And even the two steps can be automated!

## Traversix Connectivity System



### Reliable Connectivity

The Connectivity Client communicates all standard control signals, and detects the flow control method being used by your application to ensure that no data is lost in the event of network congestion. The patent-pending buffering and network traffic management of the Connectivity Client also supports applications that do not use flow control. The Client's status window provides an on-screen display of all the serial control lines as well as counts of transmit and receive traffic.

### Selecting Devices

The Connectivity Client is a Windows application that is easily accessible via the system tray. Upon launching the Client, the user logs into the Traversix Connectivity Gateway. After the user has been successfully authenticated, the Client displays a list of devices that the user is authorized to access. The device list shows names/descriptions either set by the user or the account administrator and indicates the status of each device—offline, in-use, or available. The user highlights the desired device and attaches to it. The user can also customize the Client's behavior to automatically log in when activated, to set the virtual serial port number, or even to connect to a specific device automatically when launched.

## Specifications and Requirements

Model	TCC-1000, Version 1.2
Serial Interface Rates	Auto-detected 300 bps – 115,200 bps
Flow Control	Auto-detected RTS / CTS DTR / DSR-CD XON / XOFF None
Setup	Single installation from CD
Administration	Browser-based central administration of user accounts via Connectivity Gateway
Encryption	AES 128-bit SSL
Diagnostics	Connection status Transfer statistics On-screen display of all serial control signals
Operating System	Microsoft Windows 2000 Microsoft Windows XP
Memory Recommendation	128MB
Additional Requirements	CD-ROM drive required for installation Internet connection, broadband connection recommended